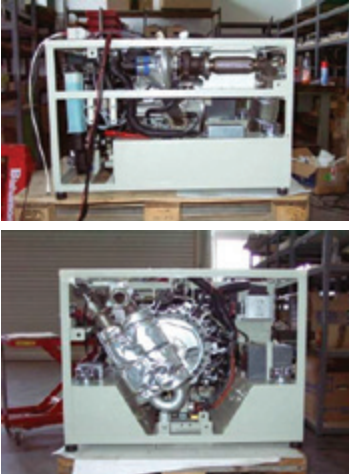


30kW at 4750 min<sup>-1</sup>



Diesel Power Generator system is an Auxiliary Power Unit (APU) and is comprised of a heavy fuel Wankel engine directly coupled to a permanent magnet generator (PMG). The basic APU components are of a modular design that can be integrated directly into an existing customer platform or configured to be a self-contained, stand-alone unit. The core components of this custom application include a single rotor 500cc liquid-cooled heavy fuel engine, a 30kW permanent magnet electric generator, and a control unit containing all necessary power management electronics.

The compactness of our engines gives us a great advantage in any application where the mounting position, the size and the weight play an important role. Compared to competitors, our heavy fuel rotary engines have an exceptional power-to-weight ratio. And because of these unique attributes, it is possible for us to build APU's, which are more than 25% and sometimes even more than 50% lighter and smaller than that of the competitors at the same power output.

In addition, compared to a reciprocating piston engine, the rotary engine shows almost no vibrations, runs very smoothly, conditioned by its internal rotating-only parts. This advantage makes it possible to reach very low noise emissions with only little insulation.

# TECHNICAL DATA

ENGINE AND SYSTEM DATA	UNITS	R 501d
Rotors		1
Engine Displacement	Liter	0.5
Maximum Speed	min <sup>-1</sup>	4750
Charging		Turbo & Intercooler
Injection		High-Pressure EFI
Coolant		Water / Ethylene Glycol
Oil Type		SAE 10W40
Engine System Voltage	Volt	12
Dimension (L x B x H)	mm	1200 x 930 x 1290
Weight	kg	530
Electrical Power	kVA	30
Current	Volt (Amp)	1 x 400 (3 phase 32A) 2 x 400 (3 phase 16A) 3 x 230 (1 phase 16A)
Frequency	Hz	50
Generator Type		Syncro
Control Strategy		Fixed speed at 4750 RPM
Sound emissions	dB	66 (measured)
Fuel Consumption	L/h	100% of power: 9.0 50% of power: 5.5 25% of power: 3.0

Further information on this system available upon request.

1. Best fuel consumption, Diesel fuel with the density 0,835 kg/dm<sup>3</sup> at 15°C.

The information on this data sheet represent normal system calibration. Specific performance will be provided with a firm offer.